

# THE WORLD'S LARGEST LAND OWNERS

Rank  
Location  
Use

1. **King Charles III and the British Royal Family**  
United Kingdom, Canada  
Agriculture, forests

This amounts to 1/6 of the surface of the United Kingdom and includes locations in London, rural areas, and more than 90% of the land in the British Royal Family's private estates.

6,600,000,000 sq m

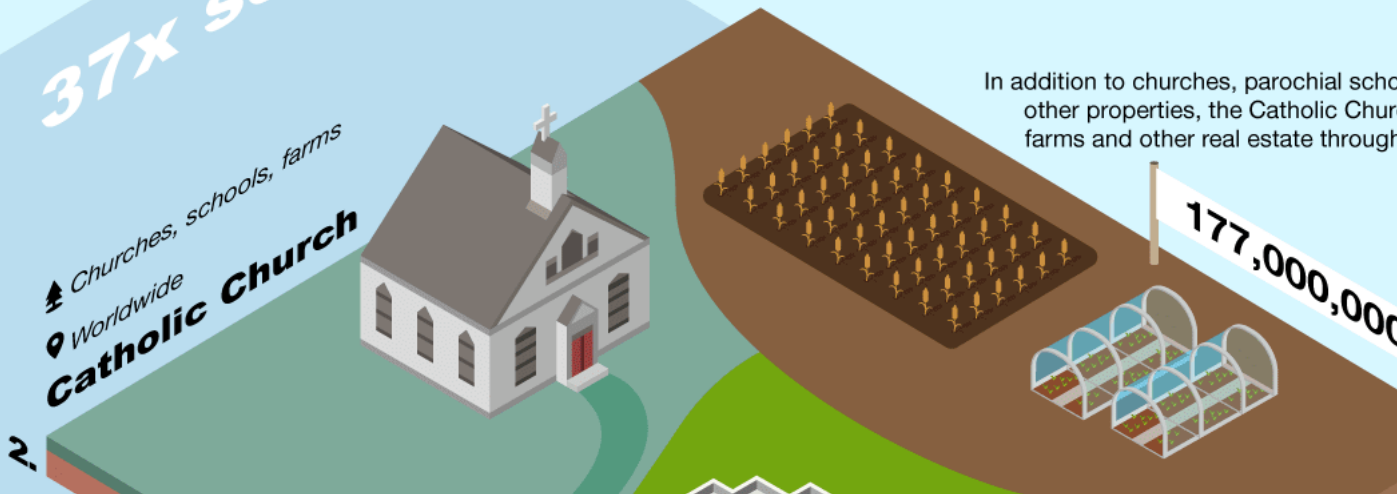


37x scale

2. **Catholic Church**  
Worldwide  
Churches, schools, farms

In addition to churches, parochial schools, and other properties, the Catholic Church owns farms and other real estate through its various dioceses and religious orders.

177,000,000 sq m





3. **Inuit People of Nunavut**

📍 Canada



87,500,000

The land was legally give Canadian government in the Land Claims Agreement



**Gina Rinehart**

- 🌳 Agriculture, cattle
- 📍 Australia, United States

Rinehart is Australia's richest person, a mining magnate, and a businesswoman.

23,969,000

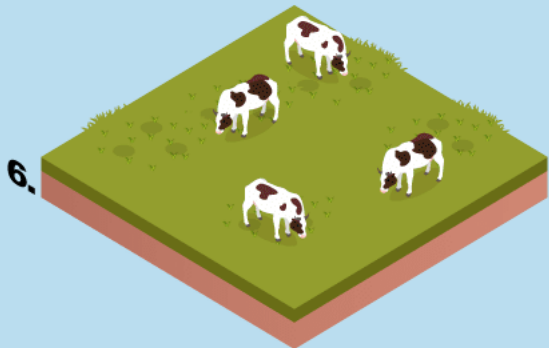


**Inuvialuit People of the Inuvialuit Settlement Region**

📍 Canada

This land was designated in the Inuvialuit Final Agreement of 1984.

22,486,000



**Mudanjiang City Mega Farm**

- 🌳 Dairy farm
- 📍 China

This is the largest farm in the world and has more than 100,000 dairy cows.

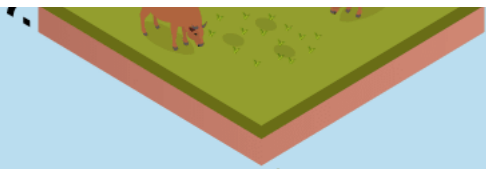
22,239,000



**Australian Agricultural Company**

- 🌳 Cattle farm
- 📍 Australia

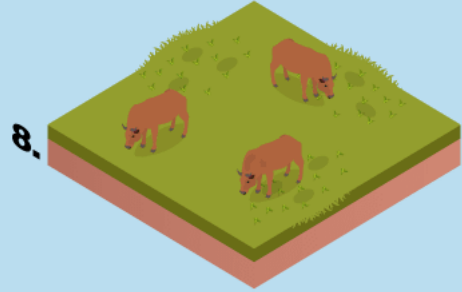
17,227,000



▼ *Australia*

The Australian Agricultural Company is Australia's oldest agricultural company, and its largest shareholder is Joe Lewis, one of the richest people in the United Kingdom.

17,297,000



8.

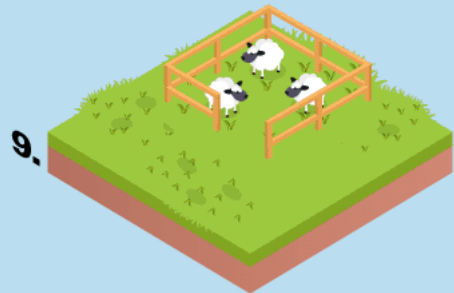
### North Australian Pastoral Company

▲ *Cattle farm*

📍 *Australia*

The North Australian Pastoral Company was founded in 1877 and is among the biggest cattle companies.

14,826,000



9.

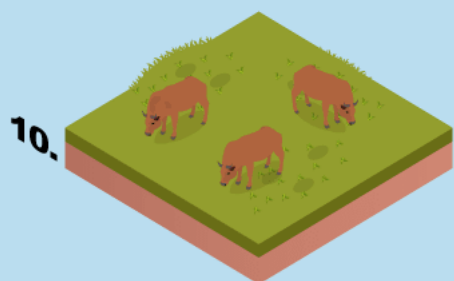
### Jumbuck Pastoral Company

▲ *Sheep farm*

📍 *Australia*

Jumbuck Pastoral Company is the largest producer of wool in Australia.

14,208,000



10.

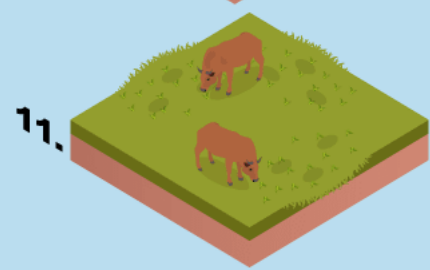
### Handbury Group

▲ *Cattle farm*

📍 *Australia*

The company owns the Swinging Shovel property in South Australia and The Rises in Western Australia.

13,047,000



11.

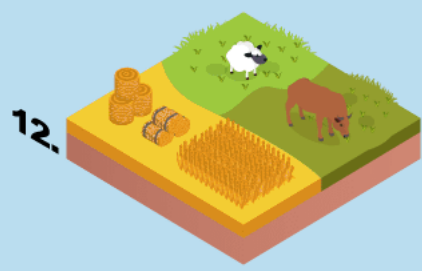
### Williams Family

▲ *Cattle farm*

📍 *Australia*

This family owns the largest working cattle farm in the world.

11,119,000



12.

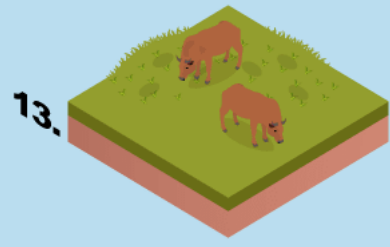
### Paraway Pastoral Company

▲ *Sheep, cattle, crop farms*

📍 *Australia*

The company owns many major sheep, cattle, and crop businesses throughout Australia.

10,872,000



13.

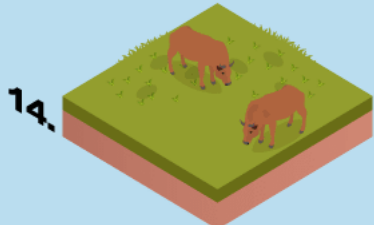
### Consolidated Pastoral Company

▲ *Cattle farm*

📍 *Australia, Indonesia*

This company is owned by Guy Hands's Terra Firma Capital Partners and has 300,000 cattle at a time.

8,895,000



14.

### McDonald Family

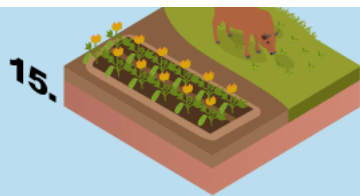
▲ *Cattle farm*

📍 *Australia*

The McDonald family has been farming in Australia since the early 19th century.

8,302,000

### Hughes Family



15.

🌳 *Cattle farm, agriculture*

📍 *Australia*

The family has the world's largest privately held Wagyu herd.

7,660,000

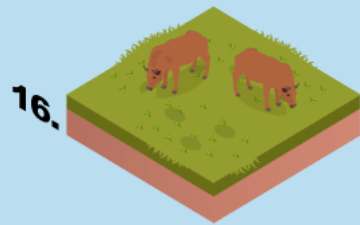
### **Crown Point Pastoral Company**

🌳 *Cattle farm*

📍 *Australia*

The Costello and Oldfield families joined together to purchase this property.

7,500,000



16.

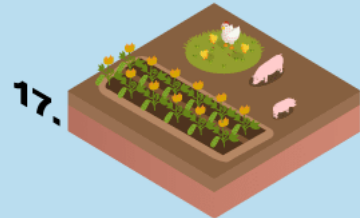
### **Brook Family**

🌳 *Agriculture*

📍 *Australia*

Organic agricultural farmer David Brook owns and operates farms throughout southern Queensland and South Australia.

7,413,000



17.

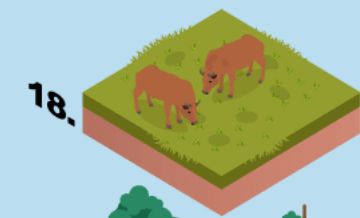
### **Heytesbury Cattle Company**

🌳 *Cattle farm*

📍 *Australia*

The Holmes à Court family owns cattle farms across Australia's Northern Territory.

6,671,000



18.

### **Svenska Cellulosa AB**

🌳 *Forestry*

📍 *Sweden, Estonia, Latvia, Lithuania*

The group owns 6 million acres of forest in northern Sweden, amounting to 6% of Sweden's surface area.

6,400,000



19.

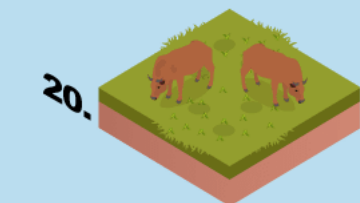
### **Brett Blundy**

🌳 *Cattle farm*

📍 *Australia*

Brett Blundy, who owns BB Retail Capital and BBRC, has amassed many acres of cattle farm property through the years.

5,930,000



20.

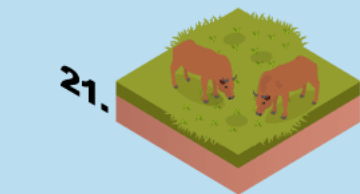
### **Mutooroo Pastoral Company**

🌳 *Cattle farm*

📍 *Australia*

The Morgan and Wells families own this land, which includes five cattle farms.

5,189,000



21.

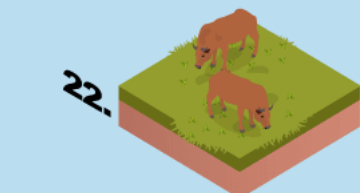
### **Hewitt Family**

🌳 *Cattle farm*

📍 *Australia*

The Hewitt family owns more than a dozen holdings in Queensland, New South Wales, and the Northern Territory.

5,065,000



22.

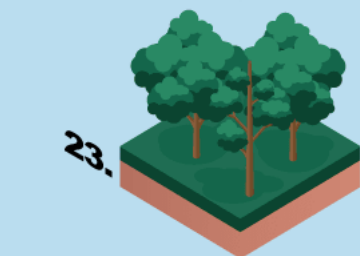
### **Mondi Group**

🌳 *Forestry*

📍 *Russia, South Africa*

The group is one of the biggest packaging and paper companies in the world and has production sites in more than 30 countries.

5,000,000



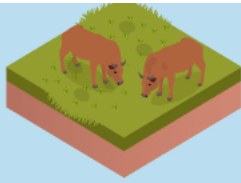
23.

### **Andrew "Twiggy" Forrest**

🌳 *Cattle farm*



24.



Cattle farm

Australia

Forrest, one of Australia's richest people, owns 16 properties in numerous parts of Australia, including the 2.7-million-acre Narwietooma property in the Northern Territory.

4,779,000

25.



Cattle farm

Australia

### Cleveland Agriculture

Cleveland Agriculture, owned by Malcolm Harris and his family, owns several cattle farms around Australia.

4,738,000

**SOURCES:**

- <https://www.lovemoney.com/gallerylist/132580/the-worlds-biggest-private-landowners>
- <https://www.onemorehectare.com/en/landstyle/these-are-the-5-biggest-landowners-in-the-world>
- <https://www.valuewalk.com/10-biggest-private-landowners/>



**MADISON**  
TRUST COMPANY